



RAMBLER FAST

129BV-06 S3 WR CI HI HRO SRC
 Standard EN ISO 20345:2011
 Sizes 38 - 47



Breathable and waterproof GORE-TEX Performance Comfort Footwear membrane and Thinsulate® B600 thermal insulation lining.

Dual component sole: direct injection Esolight 1.0 midsole with the insertion of Vibram® Rubber Fire&Ice outsole.



FIRE & ICE

Outsole ICON PU/RUBBER

- SRC Slip resistant outsole.
- Vibram® Rubber outsole HRO heat resistant
- FO Fuel resistance.
- Wide fit for maximum strength and protection.
- Grip on ladders.
- Designed for usage with crampons.



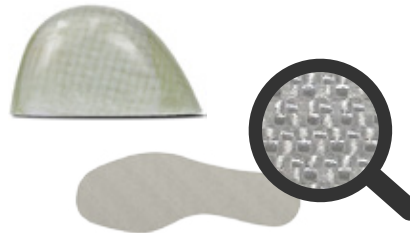
Calf leather.

BOA®

BOA® FIT SYSTEM:
 a micro-adjustable dial, a super-strong lightweight lace and low friction lace guides, engineered for effortless precision delivering a connected, fast, customized and durable fit.

Water resistant Ultimate full grain leather upper.

PZX Fiberglass toe cap (200 Joule) and perforation resistant Txzero insole made of ultimate textile material, offering outstanding lightness, protection and flexibility.



Maximum durability and stability thanks also to TPU protective element applied on the heel.



Icon · I-01

- Anatomic footbed made of open cell polyurethane foam
- Shock absorption area
- Extremely breathable
- Antibacterial Foam

	SRC Slip resistant
	A Antistatic
	P Perforation resistance
	Resistant to 200 joules
	E Energy Absorption of seat region
	FO Fuel oil resistant sole
	WRU Water penetration upper
	HRO Heat-resistant outsole
	WR Water resistance
	HI Heat insulation of the sole
	CI Cold insulation of the sole